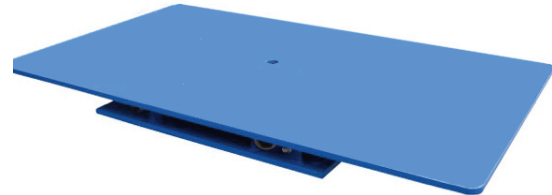


STANDARD DUTY (TM, TML, TPL & TPH) TURNTABLES

10 Year/250,000 Cycle Warranty

Turntables are used for positioning jobs where heavy duty loads must be rotated on a regular basis. There are two basic types of standard duty turntables, non-powered and powered. Turntables are available in low profile and high profile configurations.



SPECIAL FEATURES

Non-powered turntable features:

- ▶ Lower cost than powered turntables.
- ▶ These units are manually rotated.
- ▶ These units can be rotated in either direction.
- ▶ All non-powered turntables are low profile.
- ▶ Standard platforms are rectangular and round platforms are optional on all models except TML.
- ▶ Rotational limits can be provided via optional detents, locking pins, and hard stops.
- ▶ TM platforms are supported by lifetime lubricated roller bearing cam followers.
- ▶ TML platforms are supported by lifetime lubricated ball bearing roller.
- ▶ Platforms rotate around a lifetime-lubricated kingpin bearing.

Powered turntable features:

- ▶ Used where more frequent turning is required.
- ▶ Used where rotational effort would be too high in a non-powered turntable.
- ▶ Standard turntables use DC motors and drives; AC motors and drives are optional.
- ▶ Standard rotation is clockwise only.
- ▶ Optional bi-directional rotation (clockwise & counterclockwise) requires an AC motor and drive.
- ▶ Platforms rotate on a lifetime-lubricated kingpin bearing.
- ▶ Platform travel can be limited by use of optional limit switch (+/- 3° accuracy).
- ▶ Powered turntables are available in low profile and high profile configurations.
 - ▶ Low profile powered turntables:
 - Use for powered applications where low platform height is important.
 - Circular platforms are required, rectangular platforms are not available.
 - Drive motor is located at the edge of the platform and projects above platform.
 - Platforms are supported by lifetime lubricated roller bearing cam followers.
 - ▶ High profile powered turntables:
 - Use for powered applications where low platform height is not important.
 - Standard platforms are rectangular and round platforms are optional.
 - Drive motor is located under the platform.
 - Platforms are supported by inverted casters with tapered roller bearings or cam followers.

SPECIFICATION TABLE FOR STANDARD DUTY NON-POWERED TURNTABLES

Model	Capacity	Edge Load Maximum	Platform		Lowered Height	Roller Radius	Ship Weight
			Minimum	Maximum			
TML-100	1000	50	30 X 30	48 X 48	3-1/2	9	175
TML-200	2000	50	30 X 30	48 X 48	3-1/2	9	200
TM-200	2000	50	24 X 24	48 X 48	3-1/2	9	350
TM-400	4000	100	24 X 24	48 X 48	3-1/2	10	450
TM-600	6000	200	24 X 24	48 X 48	3-1/2	10-1/2	550
TM-605	6000	1150	49 X 49	60 X 60	3-1/2	21	625
TM-606	6000	1000	61 X 61	72 X 72	3-1/2	21	900
TM-607	6000	1600	73 X 73	84 X 84	3-1/2	26	1225
TM-608	6000	1500	85 X 85	96 X 96	3-1/2	26	1600
TM-804	8000	1900	48 X 48	48 X 48	3-1/2	20-1/2	600
TM-805	8000	1450	49 X 49	60 X 60	3-1/2	22-1/2	675
TM-806	8000	1150	61 X 61	72 X 72	3-1/2	22-1/2	975
TM-807	8000	1950	73 X 73	84 X 84	3-1/2	28	1375
TM-808	8000	1750	85 X 85	96 X 96	3-1/2	28	1730
TM-1005	10000	1600	49 X 49	60 X 60	3-1/2	23	750
TM-1006	10000	1250	61 X 61	72 X 72	3-1/2	23	1080
TM-1007	10000	2100	73 X 73	84 X 84	3-1/2	29	1470
TM-1008	10000	1900	85 X 85	96 X 96	3-1/2	29	1920

SPECIFICATION TABLE FOR STANDARD DUTY POWERED HIGH PROFILE TURNTABLES

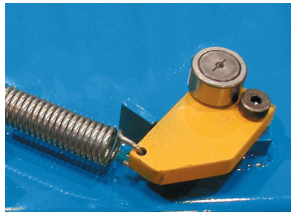
Model	Capacity	Edge load Maximum	Platform		Lowered Height	Roller Radius	Speed (RPM)	Motor HP	Ship Wt.
			Minimum	Maximum					
TPH-200	2000	100	24 X 24	48 X 48	9-1/2	8	0-8.5	1/2	375
TPH-400	4000	100	24 X 24	48 X 48	9-1/2	8	0-8.5	1/2	475
TPH-600	6000	150	24 X 24	48 X 48	9-1/2	10	0-8.5	1/2	575
TPH-605	6000	500	49 X 49	60 X 60	10	15	0-3.5	3/4	950
TPH-606	6000	500	61 X 61	72 X 72	10	15	0-3.5	3/4	1175
TPH-607	6000	1200	73 X 73	84 X 84	10	23-1/2	0-3.5	3/4	1525
TPH-608	6000	1200	85 X 85	96 X 96	10	23-1/2	0-3.5	3/4	1825
TPH-804	8000	350	48 X 48	48 X 48	10	13	0-3.5	3/4	750
TPH-805	8000	500	49 X 49	60 X 60	10	15	0-3.5	3/4	975
TPH-806	8000	500	61 X 61	72 X 72	10	15	0-3.5	1	1200
TPH-807	8000	1200	73 X 73	84 X 84	10	23-1/2	0-3.5	1	1550
TPH-808	8000	1200	85 X 85	96 X 96	10	23-1/2	0-3.5	1	1850
TPH-1005	10000	500	49 X 49	60 X 60	10	15	0-3.5	1	1075
TPH-1006	10000	500	61 X 61	72 X 72	10	15	0-3.5	1	1350
TPH-1007	10000	1200	73 X 73	84 X 84	10	23-1/2	0-3.5	1	1795
TPH-1008	10000	1200	85 X 85	96 X 96	10	23-1/2	0-3.5	1	2035

SPECIFICATION TABLE FOR STANDARD DUTY POWERED LOW PROFILE TURNTABLES

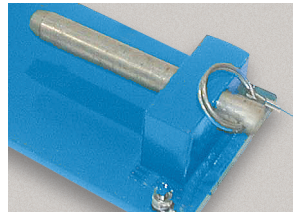
Model	Capacity	Edge Load Maximum	Minimum Platform	Maximum Platform	Lowered Height	Roller Radius	Speed (RPM)	Motor HP	Ship Wt.
TPL-200	2000	50	24 DIA.	48 DIA.	3-1/2	10	0 - 8.5	1/2	500
TPL-400	4000	50	24 DIA.	48 DIA.	3-1/2	10	0 - 8.5	1/2	550
TPL-600	6000	100	24 DIA.	48 DIA.	3-1/2	12	0 - 8.5	1/2	600
TPL-605	6000	400	49 DIA.	60 DIA.	3-1/2	15-1/2	0 - 3.5	3/4	950
TPL-606	6000	550	61 DIA.	72 DIA.	3-1/2	18-1/2	0 - 3.5	3/4	1200
TPL-607	6000	950	73 DIA.	84 DIA.	3-1/2	23-1/2	0 - 3.5	3/4	1600
TPL-608	6000	1300	85 DIA.	96 DIA.	3-1/2	27	0 - 3.5	3/4	1900
TPL-804	8000	450	48 DIA.	48 DIA.	3-1/2	16-1/2	0 - 3.5	3/4	900
TPL-805	8000	450	49 DIA.	60 DIA.	3-1/2	16-1/2	0 - 3.5	3/4	1000
TPL-806	8000	650	61 DIA.	72 DIA.	3-1/2	20	0 - 3.5	1	1250
TPL-807	8000	950	73 DIA.	84 DIA.	3-1/2	23-1/2	0 - 3.5	1	1650
TPL-808	8000	1300	85 DIA.	96 DIA.	3-1/2	27	0 - 3.5	1	1950
TPL-1005	10000	500	49 DIA.	60 DIA.	3-1/2	17	0 - 3.5	1	1050
TPL-1006	10000	700	61 DIA.	72 DIA.	3-1/2	20-1/2	0 - 3.5	1	1300
TPL-1007	10000	1000	73 DIA.	84 DIA.	3-1/2	24	0 - 3.5	1	1700
TPL-1008	10000	1400	85 DIA.	96 DIA.	3-1/2	28	0 - 3.5	1	2000

Consult the factory for special speeds, platform sizes and capacities.

OPTIONAL ROTATIONAL LIMITS FOR MANUAL TURNTABLES: DETENTS, LOCKING PINS AND HARD STOPS



▶ Detent

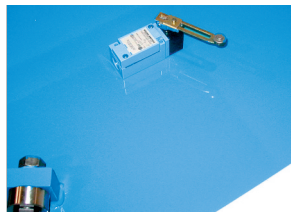


▶ Locking pin

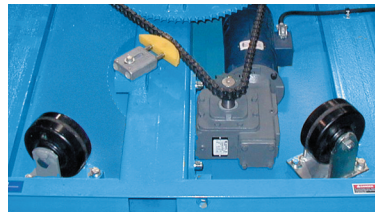


▶ Hard stop

OPTIONAL ROTATIONAL LIMITS FOR POWERED TURNTABLES: LIMIT SWITCHES, PROXIMITY SENSORS, PRECISION CONTROL PLC



▶ Limit switch



▶ Lifetime lubricated roller bearing wheel style of unit



▶ Programmable logic controller