



2127 W. Nordale Drive
 Appleton, WI 54914
 Phone: (920) 380-0397
 Fax: (920) 380-0845
miked@allliftcranes.com
sales@allliftcranes.com
www.allliftcranes.com



CW-Series Cantilevered Wall Mounted Jib Crane 1/4 to 1 Ton Capacity

Capacity (Pounds)	Model	Span	Bracket Centers	Beam Height	Flange Width	Thrust & Pull	Unit Weight	
500	CW508	8'	3' - 0"	6"	3-3/8"	2,185#	255#	
500	CW510	10'	3' - 0"	6"	3-3/8"	2,720#	275#	
500	CW512	12'	4' - 0"	6"	3-3/8"	2,560#	315#	
500	CW514	14'	4' - 0"	8"	4"	2,975#	335#	
500	CW516	16'	4' - 0"	8"	4"	3,526#	455#	
500	CW518	18'	4' - 0"	8"	4"	4,150#	480#	
500	CW520	20'	4' - 0"	12"	6 1/2"	4,980#	810#	
1,000	CW108	8'	3' - 0"	8"	4"	3,785#	285#	
1,000	CW110	10'	3' - 0"	8"	4"	4,750#	315#	
1,000	CW112	12'	3' - 0"	8"	4"	5,768#	370#	
1,000	CW114	14'	4' - 0"	8"	4"	5,145#	490#	
1,000	CW116	16'	4' - 0"	12"	6 1/2"	6,125#	660#	
1,000	CW118	18'	4' - 0"	12"	6 1/2"	6,950#	715#	
1,000	CW120*	20'	6' - 0"	12"	6 1/2"	5,450#	890#	
2,000	CW208	8'	4' - 0"	8"	4"	5,250#	380#	
2,000	CW210	10'	5' - 0"	12"	6 1/2"	5,335#	545#	
2,000	CW212	12'	5' - 0"	12"	6 1/2"	6,450#	585#	
2,000	CW214	14'	5' - 0"	12"	6 1/2"	7,605#	640#	
2,000	CW216*	16'	6' - 0"	12"	6 1/2"	7,390#	810#	
2,000	CW218*	18'	6' - 0"	16"	7"	8,750#	1,085#	
2,000	CW220*	20'	6' - 0"	16"	7"	9,805#	1,190#	

Effective 11/15

* **Bolt together design - All other models are WELDED.**

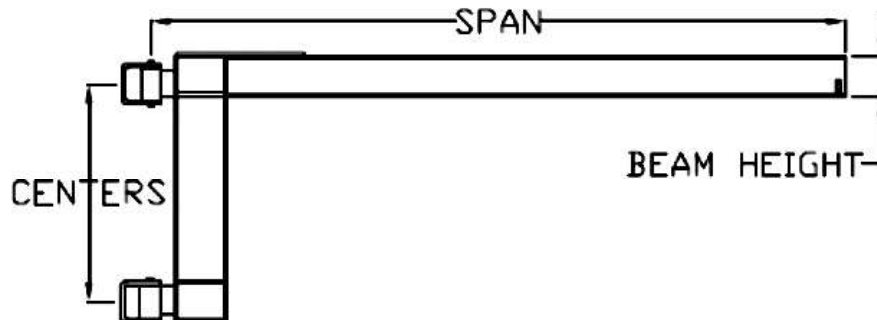
NOTE:

- Mounting bolts not included – use grade 5 or better provided by the installer.
- All weights are estimated and dimensions are subject to change.

Accessories: TG Tagline Kits

RB Rotation Bumpers

Hoists & Trolleys





2127 W. Nordale Drive
 Appleton, WI 54914
 Phone: (920) 380-0397
 Fax: (920) 380-0845
miked@allliftcranes.com
sales@allliftcranes.com
www.allliftcranes.com



CW-Series Cantilevered Wall Mounted Jib Crane 2 and 3 Ton Capacity

Capacity (Pounds)	Model	Span	Bracket Centers	Beam Height	Flange Width	Thrust & Pull	Unit Weight
4,000	CW408	8'	4' - 0"	12"	6 1/2"	9,950#	480#
4,000	CW410	10'	4' - 0"	12"	6 1/2"	12,445#	590#
4,000	CW412	12'	4' - 0"	12"	6 1/2"	14,975#	620#
4,000	CW414	14'	5' - 0"	16"	7"	14,350#	890#
4,000	CW416*	16'	6' - 0"	21"	6 1/2"	14,075#	1,330#
4,000	CW418*	18'	6' - 0"	21"	6 1/2"	15,990#	1,515#
4,000	CW420*	20'	7' - 6"	24"	7"	14,650#	1,890#
6,000	CW608	8'	4' - 0"	16"	7"	14,855#	710#
6,000	CW610	10'	4' - 0"	16"	7"	18,600#	780#
6,000	CW612*	12'	6' - 0"	16"	7"	14,950#	989#
6,000	CW614*	14'	6' - 0"	16"	7"	17,665#	1,105#
6,000	CW616*	16'	6' - 6"	21"	6 1/2"	18,975#	1,440#
6,000	CW618*	18'	7' - 6"	24"	7"	18,750#	1,820#
6,000	CW620*	20'	9' - 6"	24"	7"	16,655#	2,286#

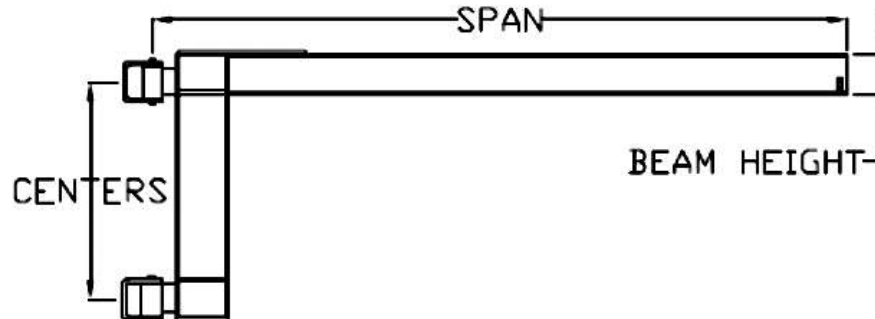
Effective 11/15

* **Bolt together design - All other models are WELDED.**

NOTE:

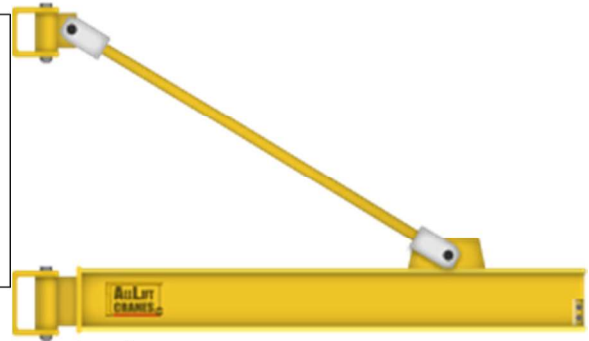
- Mounting bolts not included – use grade 5 or better provided by the installer.
- All weights are estimated and dimensions are subject to change.

Accessories: TG Tagline Kits
 RB Rotation Bumpers
 Hoists & Trolleys





2127 W. Nordale Drive
 Appleton, WI 54914
 Phone: (920) 380-0397
 Fax: (920) 380-0845
miked@allliftcranes.com
sales@allliftcranes.com
www.allliftcranes.com



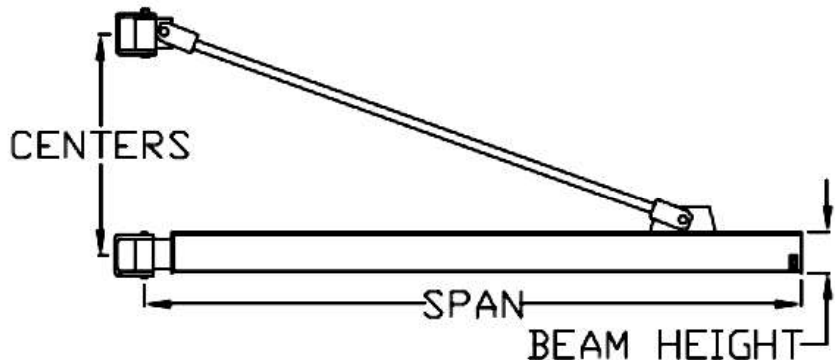
TRW-Series Overbraced Tie Rod Wall Mounted Jib Crane 1/2 and 1 Ton Capacity

Capacity (Pounds)	Model	Span	Bracket Centers	Beam Height	Flange Width	Thrust & Pull	Unit Weight	
1,000	TRW108	8'	2'-9"	6"	3-3/8"	4,205#	205#	
1,000	TRW110	10'	3'-0"	6"	3-3/8"	4,850#	240#	
1,000	TRW112	12'	3'-9"	6"	3-3/8"	4,640#	265#	
1,000	TRW114	14'	4'-6"	6"	3-3/8"	4,545#	315#	
1,000	TRW116	16'	5'-6"	6"	3-3/8"	4,230#	325#	
1,000	TRW118	18'	6'-0"	8"	4"	4,515#	465#	
1,000	TRW120	20'	6'-6"	8"	4"	4,665#	520#	
1,000	TRW122	22'	7' 0"	12"	6 1/2"	5,205#	1,145#	
1,000	TRW124	24'	7' 6"	12"	6 1/2"	5,330#	1,235#	
1,000	TRW126	26'	8' 0"	12"	6 1/2"	5,945#	1,310#	
1,000	TRW128	28'	9' 0"	12"	6 1/2"	6,125#	1,420#	
1,000	TRW130	30'	10' 0"	12"	6 1/2"	6,625#	1,505#	
2,000	TRW208	8'	2'-9"	6"	3-3/8"	7,782#	215#	
2,000	TRW210	10'	3'-0"	6"	3-3/8"	8,790#	250#	
2,000	TRW212	12'	3'-9"	6"	3-3/8"	8,525#	275#	
2,000	TRW214	14'	4'-6"	8"	4"	8,590#	385#	
2,000	TRW216	16'	5'-6"	8"	4"	8,050#	424#	
2,000	TRW218	18'	6'-0"	8"	4"	8,185#	485#	
2,000	TRW220	20'	6'-0"	12"	6 1/2"	9,345#	690#	
2,000	TRW222	22'	7' 0"	12"	6 1/2"	9,610#	1,280#	
2,000	TRW224	24'	7' 6"	12"	6 1/2"	10,120#	1,395#	
2,000	TRW226	26'	8' 0"	12"	6 1/2"	10,205#	1,510#	
2,000	TRW228	28'	9' 0"	12"	6 1/2"	10,310#	1,620#	
2,000	TRW230	30'	10' 0"	12"	6 1/2"	10,365#	1,725#	

Effective 7/16

NOTE:

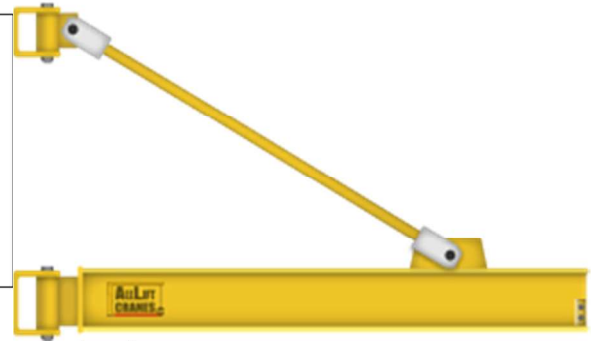
- Mounting bolts not included – use grade 5 or better provided by the installer.
- All weights are estimated and dimensions are subject to change.



Accessories: TG Tagline Kits
 RB Rotation Bumpers
 Hoists & Trolleys



2127 W. Nordale Drive
 Appleton, WI 54914
 Phone: (920) 380-0397
 Fax: (920) 380-0845
miked@allliftcranes.com
sales@allliftcranes.com
www.allliftcranes.com



TRW-Series Overbraced Tie Rod Wall Mounted Jib Crane 2 and 3 Ton Capacity

Capacity (Pounds)	Model	Span	Bracket Centers	Beam Height	Flange Width	Thrust & Pull	Unit Weight	
4,000	TRW408	8'	2'-9"	8"	4"	14,875#	310#	
4,000	TRW410	10'	3'-0"	8"	4"	17,250#	350#	
4,000	TRW412	12'	3'-9"	8"	4"	16,282#	390#	
4,000	TRW414	14'	4'-6"	8"	4"	15,875#	445#	
4,000	TRW416	16'	5'-6"	12"	6 1/2"	14,975#	615#	
4,000	TRW418	18'	6'-0"	12"	6 1/2"	15,585#	685#	
4,000	TRW420	20'	6'-6"	12"	6 1/2"	16,150#	820#	
4,000	TRW422	22'	7' 0"	12"	6 1/2"	18,415#	1,310#	
4,000	TRW424	24'	7' 6"	12"	6 1/2"	18,910#	1,425#	
4,000	TRW426	26'	8' 0"	12"	6 1/2"	19,420#	1,540#	
4,000	TRW428	28'	9' 0"	12"	6 1/2"	18,880#	1,650#	
4,000	TRW430	30'	10' 0"	12"	6 1/2"	18,200#	1,755#	
6,000	TRW608	8'	2'-9"	8"	4"	22,170#	320#	
6,000	TRW610	10'	3'-3"	8"	4"	23,275#	375#	
6,000	TRW612	12'	4'-0"	12"	6 1/2"	22,750#	575#	
6,000	TRW614	14'	4'-9"	12"	6 1/2"	22,350#	655#	
6,000	TRW616	16'	5'-6"	12"	6 1/2"	21,975#	715#	
6,000	TRW618	18'	6'-3"	16"	7"	22,375#	975#	
6,000	TRW620	20'	7'-0"	16"	7"	22,455#	1,455#	

Effective 7/16

NOTE:

- Mounting bolts not included – use grade 5 or better provided by the installer.
- All weights are estimated and dimensions are subject to change.

Accessories: TG Tagline Kits
 RB Rotation Bumpers
 Hoists & Trolleys

