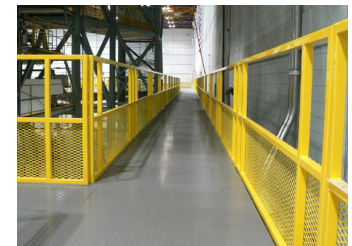
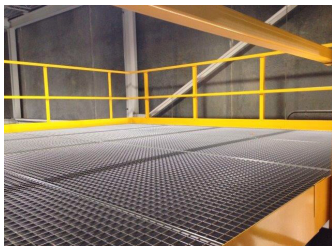


BETTER BUILT
STRONGER BUILT
PANEL BUILT



Panel Built's steel line fabricates powder-coated structural steel mezzanines and stair systems to your specifications—with custom sizes, heights, spans, decking materials and landings. Heavy-duty and long-lasting, Panel Built is your single-source mezzanine system provider.

Mezzanines



Features

- Modular bolt-together systems
- Sturdy handrail with 4" kickplate
- Heavy-duty columns & baseplates
- Heavy-duty prefabricated stairs and accessories
- 4-MIL powder coated steel components provide a superior level of durability against abusive, corrosive applications



Standard Decking Options

- **Advantech** - This is a high quality product superior to ordinary plywood and OSB options due to its enhanced strength and moisture resistance
- **ResinDek** - This is high density composite flooring, recommended for mezzanines requiring a solid floor subject to heavy loads from the use of pallet jacks, carts or dollies
- **Diamond Plate** - This steel decking is considered to be our second most durable flooring
- **Concrete Flooring** - The most durable type of mezzanine flooring by far is concrete
- **Press-locked Grating** - This decking is a common choice in the waste management, mining, and food service industries



Applications

- Towers
- Storage
- Gate Houses
- Field Office
- Electric Sub Station
- Press Box
- Security Office